



Tindall



PARKING DECK PROJECTS



MILTON AVENUE PARKING DECK

ALPHARETTA, GA | GEORGIA DIVISION

The downtown of Alpharetta, Georgia is truly the heart of the city, offering residents and visitors alike an inviting space to eat, shop, work, and play. With its popularity on the rise, the city sought additional public parking to meet the demands of the growing traffic. Tindall was brought to the design-build table early to help imagine and create one of the city's solutions — a stunning, four-story total precast parking deck that perfectly matched the surrounding downtown architecture of Milton Avenue.

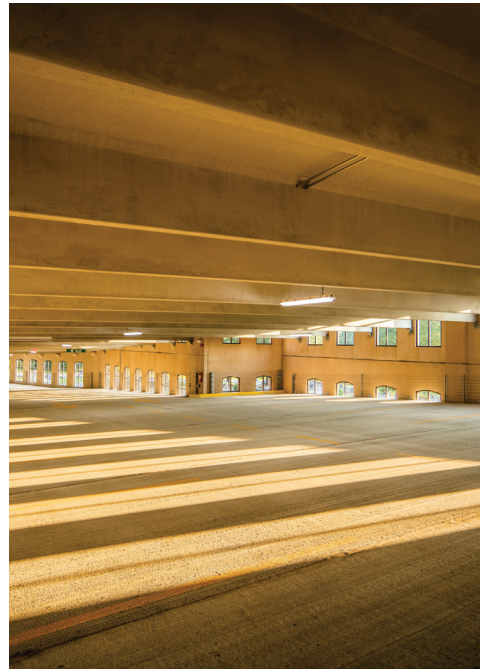
From the beginning of the project, it was clear that aesthetics would play a major role in the creation of this 110,000-square-foot construction. On top of offering 260 parking spaces and first-floor retail locations, the deck needed to seamlessly blend with the existing architecture of Alpharetta. Working closely with the design teams and contractor, Tindall developed a cost-effective solution that saved over three months' construction time — brick-faced architectural wall panels in place of field-laid brick.

MILTON AVENUE PARKING DECK (CONT.)

ALPHARETTA, GA
GEORGIA DIVISION



Tindall's engineers helped carefully design precast architectural panels that featured uniformly spaced openings which perfectly mimicked local commercial buildings, cleverly disguising the functionality of the deck's total precast interior. Tindall also utilized curves, recesses, intricate patterns, and separately attached cornices to bring the vision to life. In the end, the Tindall team created a total precast structure that met all of the project's requirements, remained under budget, and was erected in just six weeks.



FROST TOWER PARKING GARAGE

SAN ANTONIO, TX | TEXAS DIVISION

When KDC and Weston Urban envisioned a 23-story office tower for anchor tenant Cullen/Frost Bankers Inc., they assembled a powerhouse team to bring that vision to life. Early in the design phase, the team recognized that precast would provide several key benefits for the separate garage portion of the build. First, precast would offer significant time and cost savings; and second, the right precast provider would empower the remaining team to focus their efforts on the tower itself. This meant they needed an innovative and efficient partner that could collaborate on design to solve complex challenges. That's why the first subcontract released by the contractor, Clark Construction Group, went to Tindall.



FROST TOWER PARKING GARAGE (CONT.)

SAN ANTONIO, TX
TEXAS DIVISION



The team at Tindall closely collaborated with the project's design team to develop the tower's parking solution — a 6.5-level precast parking deck that featured 20,000 square feet of ground-floor retail and integrated into a cast-in-place tower structure. The 280,000-square-foot precast structure featured over 900 parking spaces and an offsetting stairs solution to provide flexibility for the retail layout. Tindall also designed a 56-foot opening at the loading dock, allowing tractor trailers ample access from a narrow side street. Tindall also coordinated the critically important step of installing a transformer vault within the deck early in the schedule. This provided reliable power to Clark Construction Group early on in the project, fueling their progress in the tower.

Being brought to the table early empowered the Tindall team to provide the right solutions to the project's complex challenges. In the end, Tindall developed a time- and cost-saving precast solution that helped propel the Frost Tower project forward.



EAST TENNESSEE STATE UNIVERSITY PARKING DECK

JOHNSON CITY, TN | SOUTH CAROLINA DIVISION

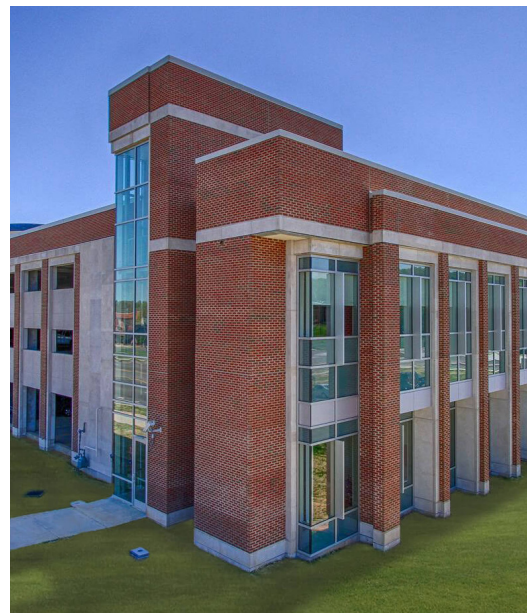


EAST TENNESSEE STATE UNIVERSITY PARKING DECK (CONT.)

JOHNSON CITY, TN
SOUTH CAROLINA DIVISION



The East Tennessee State University parking structure features 1,200 parking spaces for use by students, adjacent Public Safety Office workers, University Welcome Center employees, and Food Services staff. This large 425,000-square-foot project featured stunning architecture including field laid brick and limestone veneer, trim to match the surrounding campus constructions, spandrels, and other exposed precast elements. To mimic the limestone elements of adjacent buildings, Tindall utilized architectural concrete.



A photograph of the Freddie Mac HQ5 Parking Garage, a modern multi-story building with a prominent glass-enclosed staircase tower. The building is set against a clear blue sky. A walkway with a metal railing leads towards the entrance of the building.

FREDDIE MAC HQ5 PARKING GARAGE

MCLEAN, VA | VIRGINIA DIVISION



The Freddie Mac HQ5 Parking Garage is a colossal nine-story facility located in McLean, VA. The structure features seven above-ground levels, as well as two levels enclosed beneath ground, offering a total of 1,492 spaces for visitors. While Tindall is no stranger to creating enormous parking structures that are as aesthetically pleasing as they are functional, it was clear from the design and development phase that the Tindall team would have several unique challenges ahead of them — including a jobsite located on a very tight footprint along a one-way street.

With the structure being built into a hillside, the first major hurdle of this project was to develop a robust structural frame capable of supporting 20 feet of retained earth on one side of the building. By leveraging its considerable engineering resources, Tindall devised a system of shear walls, floor slabs, and sturdy connections that allowed the garage to stabilize the adjacent slope without the added expense of an independent retaining wall.

FREDDIE MAC HQ5 PARKING GARAGE (CONT.)

MCLEAN, VA | VIRGINIA DIVISION



The second challenge was designing the first two levels to withstand the loads of emergency vehicles and firetrucks — loads eight times higher than a typical parking garage is designed for. The solution for this came in the form of specially designed double tees, beams, and columns, as well as special bearing corbels. For the exterior, the structure featured architectural columns, walls, and spandrels with a custom formliner to elevate the aesthetic presence of the garage. In the end, Tindall was able to engineer a wide variety of specially designed components to meet the requirements of the project, all while offering the customer a more economical solution, a tighter schedule, and the signature support of the Tindall team.



NICHOLSON GATEWAY PARKING DECK — LSU

BATON ROUGE, LA | MISSISSIPPI DIVISION

When Louisiana State University (LSU) needed a five-story parking deck for student housing, Tindall was invited to the table early in the design-build process to help develop a precast solution that could save the university both time and money. Working alongside long-time partner Lemoine Company, Tindall provided the team with valuable design and project pricing insights right from the start. The result was a more cost-effective precast solution than the original cast-in-place design — one that would allow the team to create a stunning architectural exterior while decreasing the original construction schedule by 30 percent. That just goes to show, design-build is where precast truly shines.

As part of the design-build team, Tindall had the opportunity to project pricing at an early stage, ensuring the final precast design was the most efficient available and that it stayed within the customer's budget. To bring this 246,748-squarefoot parking structure to life, Tindall produced eleven types of precast components, including double tees, spandrels, shear walls, columns, flat slabs, architectural panels, and more. The final parking deck contained 803 spaces inside, and the exterior was far from plain gray.



NICHOLSON GATEWAY PARKING DECK — LSU (CONT.)

BATON ROUGE, LA | MISSISSIPPI DIVISION



From the beginning of the design-build process, Tindall knew that aesthetics would play an integral role in the final product. The exterior of the parking deck needed to match the adjacent buildings' design features and façade, as well as other buildings throughout the LSU campus. To accomplish this, Tindall cast a series of panels that featured 10,630 square feet of thinset brick. The brick portions of these panels were a unique color designed to blend with the surrounding structures. The first floor utilized cornices and projected brick, while the remaining levels featured architectural, buff-colored concrete. Tindall's involvement in the early design-build stages led to a solution that perfectly blends with its environment while offering a faster completion time, lower cost, and precast's signature long-term performance.

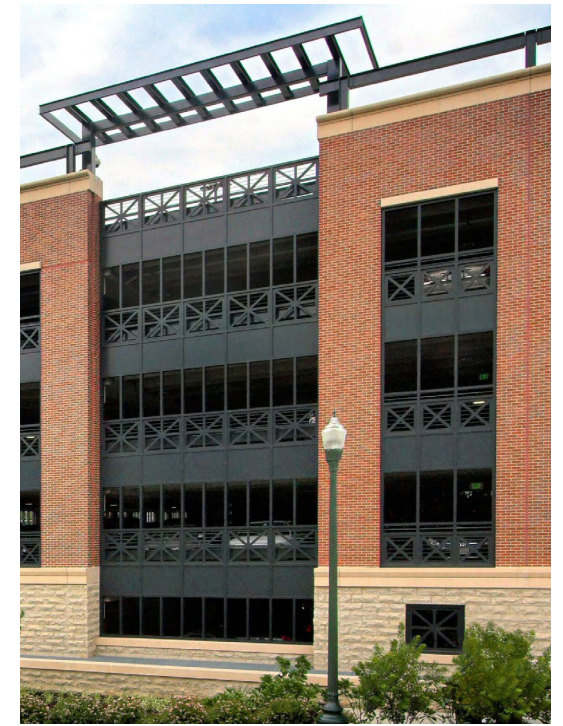


BYRD STREET PARKING DECK

RICHMOND, VA | VIRGINIA DIVISION



The Byrd Street Parking Deck is a five-level structure that features almost 900 parking spots. Despite the many architectural intricacies of this 237,000-square-foot project, Tindall was able to complete erection 12 weeks ahead of schedule and come in under budget. These two factors combined to substantially cut the cost of construction.



MORE PARKING DECK PROJECTS



THE PARK AT SOUTH MARKET

NEW ORLEANS, LA

Located in the heart of downtown New Orleans, The Park at South Market is a mixed-use development offering luxury apartments, shops, and a four-story parking deck.

[READ FULL PROFILE](#)

ASHEVILLE AIRPORT

ASHEVILLE, NC

To meet the growing needs of this airport, Tindall created a 343,884-square-foot, five-story parking garage that provides covered access to the terminal. The structure features stunning architectural elements which help it blend perfectly with the natural beauty of its surroundings.

[READ FULL PROFILE](#)



tindallcorp.com